

21
SET02

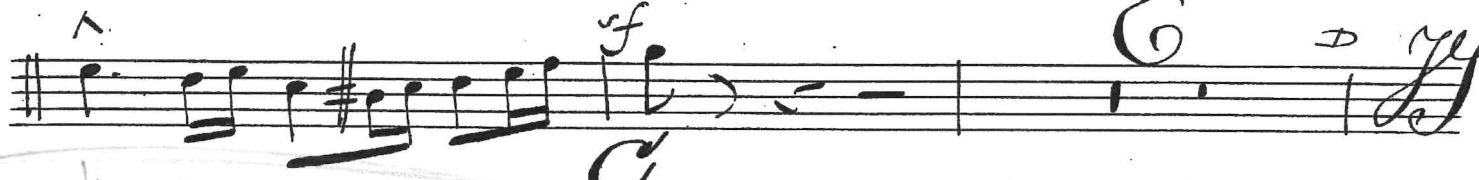
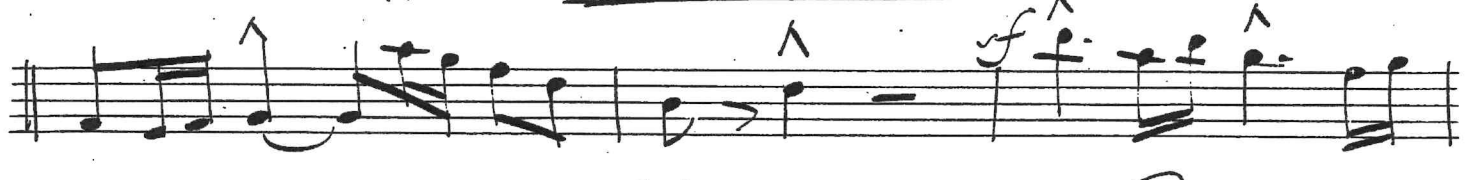
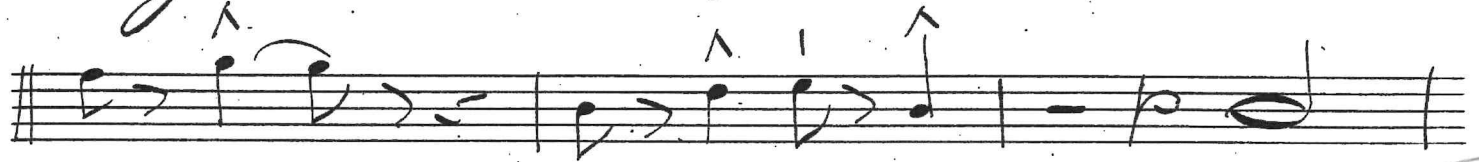
Bass Trombone

Te Deum & Benedictus

by Edward Elgar

Te Deum Laudamus

Allegro Marcato $\text{G} \flat \frac{4}{4}$



Handwritten musical score for Trombe (Tuba) and 2nd Tromb. The score is written on ten staves. The first staff is for the Trombe, starting with a treble clef and a key signature of one sharp (F#). The second staff is for the 2nd Tromb, starting with a bass clef and a key signature of one sharp (F#). The score includes various musical notations such as notes, rests, and dynamic markings. The first staff has a dynamic marking of *p* and a tempo marking of *Andante*. The second staff has a dynamic marking of *mf* and a tempo marking of *Allargando*. The third staff has a dynamic marking of *ff* and a tempo marking of *Animato*. The fourth staff has a dynamic marking of *mf* and a tempo marking of *Andante*. The fifth staff has a dynamic marking of *ff* and a tempo marking of *Andante*. The sixth staff has a dynamic marking of *ff* and a tempo marking of *Andante*. The seventh staff has a dynamic marking of *ff* and a tempo marking of *Andante*. The eighth staff has a dynamic marking of *ff* and a tempo marking of *Andante*. The ninth staff has a dynamic marking of *ff* and a tempo marking of *Andante*. The tenth staff has a dynamic marking of *ff* and a tempo marking of *Andante*. The score is written in a cursive style with various annotations and markings.

Handwritten musical score for Trombe (Tuba) and 2nd Tromb. The score is written on ten staves. The first staff is for the Trombe, starting with a treble clef and a key signature of one sharp (F#). The second staff is for the 2nd Tromb, starting with a bass clef and a key signature of one sharp (F#). The score includes various musical notations such as notes, rests, and dynamic markings. The first staff has a dynamic marking of *p* and a tempo marking of *Andante*. The second staff has a dynamic marking of *mf* and a tempo marking of *Allargando*. The third staff has a dynamic marking of *ff* and a tempo marking of *Animato*. The fourth staff has a dynamic marking of *mf* and a tempo marking of *Andante*. The fifth staff has a dynamic marking of *ff* and a tempo marking of *Andante*. The sixth staff has a dynamic marking of *ff* and a tempo marking of *Andante*. The seventh staff has a dynamic marking of *ff* and a tempo marking of *Andante*. The eighth staff has a dynamic marking of *ff* and a tempo marking of *Andante*. The ninth staff has a dynamic marking of *ff* and a tempo marking of *Andante*. The tenth staff has a dynamic marking of *ff* and a tempo marking of *Andante*. The score is written in a cursive style with various annotations and markings.

Tempo *K Accomp* *pp*

Handwritten musical notation for the first system, including a treble clef, a key signature of one flat, and a 9/8 time signature. The notation consists of two staves with various notes, rests, and dynamic markings.

fp *M Soli* *rit* *pp*

4 *Chorus Basso. a tempo*

N

Handwritten musical notation for the second system, including a treble clef, a key signature of one flat, and a 9/8 time signature. The notation consists of two staves with various notes, rests, and dynamic markings.

Sim *pp*

1 animato 3

Handwritten musical notation for the third system, including a treble clef, a key signature of one flat, and a 9/8 time signature. The notation consists of two staves with various notes, rests, and dynamic markings.

ff

Four empty musical staves at the bottom of the page.

#

Handwritten musical score consisting of 10 staves. The first staff begins with a dynamic marking *P* (piano) and a fermata. The second staff continues the melodic line. The third and fourth staves feature sustained notes with accents (^). The fifth staff has a dynamic marking *f* (forte). The sixth staff includes the handwritten notes "12 3 bi-bi" and a dynamic marking *ff* (fortissimo). The seventh staff has a dynamic marking *f* and a circled "3". The eighth staff contains a circled "3" and a circled "4". The ninth and tenth staves conclude the section with a circled "3" and a circled "4".

Handwritten musical score for a section starting with the tempo marking *Piu Lento*. The time signature is $\frac{3}{4}$. The staff includes a dynamic marking *R* (ritardando) and a circled "14". The section ends with a double bar line and a fermata.

Handwritten musical score for a section starting with a dynamic marking *S* (sforzando) and a circled "7". The tempo marking is *Stringendo rit*. The text "Basso chorus." is written below the staff. The section concludes with a fermata.

Handwritten musical score for a section starting with a dynamic marking *Sp* (sforzando) and a circled "1". The tempo marking is *Dim* (diminuendo). The section concludes with a fermata.

Handwritten musical score for a section starting with a dynamic marking *U* (ultra) and the text "soli". The tempo marking is *V piu lento poco a poco*. The section concludes with a fermata.

Benedictus

Andante *ad lib* *Homob* *atempo*

rit 1 A C B 10 C

D 3

F

3 *Trinato* *1st tromb*

allargando *Moderato*

1 *dim.* *rit.* *Piu Lento*

p *pp* *dim.*

5 *1* *5* *rit 2* *ff*

Allegro Maestoso *Tempo*
Come prima

K *ff* *Lento & grandioso*

accel *tuba* *tempo*

I

sf

ff *stringendo*

cresc. *sf*